

Tulyda kabaldai

Medinės lazdelės

Povilas Velikis

♩ = 90



9 1



17 2



25 3



33



41 4



48



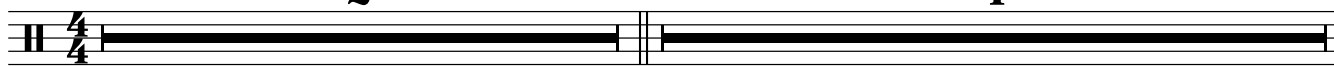
55 ♩ = 90

2

Suolai

1S

4



[illegible]

2S

35

4S

5S

rit.

6S

A tempo

7S

8S

9S

The first staff of the exercise begins with a treble clef and a key signature of one sharp (F#). The melody consists of a sequence of eighth and sixteenth notes. The first measure contains two eighth notes (G4, A4), followed by a quarter note (B4), and then a quarter note (C5). The second measure contains two eighth notes (D5, E5), followed by a quarter note (F#5), and then a quarter note (G5). The third measure contains two eighth notes (A5, B5), followed by a quarter note (C6), and then a quarter note (D6). The fourth measure contains two eighth notes (E6, F#6), followed by a quarter note (G6), and then a quarter note (A6). The fifth measure contains two eighth notes (B6, C7), followed by a quarter note (D7), and then a quarter note (E7). The sixth measure contains two eighth notes (F#7, G7), followed by a quarter note (A7), and then a quarter note (B7). The seventh measure contains two eighth notes (C8, D8), followed by a quarter note (E8), and then a quarter note (F#8). The eighth measure contains two eighth notes (G8, A8), followed by a quarter note (B8), and then a quarter note (C9). The ninth measure contains two eighth notes (D9, E9), followed by a quarter note (F#9), and then a quarter note (G9). The tenth measure contains two eighth notes (A9, B9), followed by a quarter note (C10), and then a quarter note (D10). The eleventh measure contains two eighth notes (E10, F#10), followed by a quarter note (G10), and then a quarter note (A10). The twelfth measure contains two eighth notes (B10, C11), followed by a quarter note (D11), and then a quarter note (E11). The thirteenth measure contains two eighth notes (F#11, G11), followed by a quarter note (A11), and then a quarter note (B11). The fourteenth measure contains two eighth notes (C12, D12), followed by a quarter note (E12), and then a quarter note (F#12). The fifteenth measure contains two eighth notes (G12, A12), followed by a quarter note (B12), and then a quarter note (C13). The sixteenth measure contains two eighth notes (D13, E13), followed by a quarter note (F#13), and then a quarter note (G13). The seventeenth measure contains two eighth notes (A13, B13), followed by a quarter note (C14), and then a quarter note (D14). The eighteenth measure contains two eighth notes (E14, F#14), followed by a quarter note (G14), and then a quarter note (A14). The nineteenth measure contains two eighth notes (B14, C15), followed by a quarter note (D15), and then a quarter note (E15). The twentieth measure contains two eighth notes (F#15, G15), followed by a quarter note (A15), and then a quarter note (B15). The twenty-first measure contains two eighth notes (C16, D16), followed by a quarter note (E16), and then a quarter note (F#16). The twenty-second measure contains two eighth notes (G16, A16), followed by a quarter note (B16), and then a quarter note (C17). The twenty-third measure contains two eighth notes (D17, E17), followed by a quarter note (F#17), and then a quarter note (G17). The twenty-fourth measure contains two eighth notes (A17, B17), followed by a quarter note (C18), and then a quarter note (D18). The twenty-fifth measure contains two eighth notes (E18, F#18), followed by a quarter note (G18), and then a quarter note (A18). The twenty-sixth measure contains two eighth notes (B18, C19), followed by a quarter note (D19), and then a quarter note (E19). The twenty-seventh measure contains two eighth notes (F#19, G19), followed by a quarter note (A19), and then a quarter note (B19). The twenty-eighth measure contains two eighth notes (C20, D20), followed by a quarter note (E20), and then a quarter note (F#20). The twenty-ninth measure contains two eighth notes (G20, A20), followed by a quarter note (B20), and then a quarter note (C21). The thirtieth measure contains two eighth notes (D21, E21), followed by a quarter note (F#21), and then a quarter note (G21). The thirty-first measure contains two eighth notes (A21, B21), followed by a quarter note (C22), and then a quarter note (D22). The thirty-second measure contains two eighth notes (E22, F#22), followed by a quarter note (G22), and then a quarter note (A22). The thirty-third measure contains two eighth notes (B22, C23), followed by a quarter note (D23), and then a quarter note (E23). The thirty-fourth measure contains two eighth notes (F#23, G23), followed by a quarter note (A23), and then a quarter note (B23). The thirty-fifth measure contains two eighth notes (C24, D24), followed by a quarter note (E24), and then a quarter note (F#24). The thirty-sixth measure contains two eighth notes (G24, A24), followed by a quarter note (B24), and then a quarter note (C25). The thirty-seventh measure contains two eighth notes (D25, E25), followed by a quarter note (F#25), and then a quarter note (G25). The thirty-eighth measure contains two eighth notes (A25, B25), followed by a quarter note (C26), and then a quarter note (D26). The thirty-ninth measure contains two eighth notes (E26, F#26), followed by a quarter note (G26), and then a quarter note (A26). The fortieth measure contains two eighth notes (B26, C27), followed by a quarter note (D27), and then a quarter note (E27). The forty-first measure contains two eighth notes (F#27, G27), followed by a quarter note (A27), and then a quarter note (B27). The forty-second measure contains two eighth notes (C28, D28), followed by a quarter note (E28), and then a quarter note (F#28). The forty-third measure contains two eighth notes (G28, A28), followed by a quarter note (B28), and then a quarter note (C29). The forty-fourth measure contains two eighth notes (D29, E29), followed by a quarter note (F#29), and then a quarter note (G29). The forty-fifth measure contains two eighth notes (A29, B29), followed by a quarter note (C30), and then a quarter note (D30). The forty-sixth measure contains two eighth notes (E30, F#30), followed by a quarter note (G30), and then a quarter note (A30). The forty-seventh measure contains two eighth notes (B30, C31), followed by a quarter note (D31), and then a quarter note (E31). The forty-eighth measure contains two eighth notes (F#31, G31), followed by a quarter note (A31), and then a quarter note (B31). The forty-ninth measure contains two eighth notes (C32, D32), followed by a quarter note (E32), and then a quarter note (F#32). The fiftieth measure contains two eighth notes (G32, A32), followed by a quarter note (B32), and then a quarter note (C33). The fifty-first measure contains two eighth notes (D33, E33), followed by a quarter note (F#33), and then a quarter note (G33). The fifty-second measure contains two eighth notes (A33, B33), followed by a quarter note (C34), and then a quarter note (D34). The fifty-third measure contains two eighth notes (E34, F#34), followed by a quarter note (G34), and then a quarter note (A34). The fifty-fourth measure contains two eighth notes (B34, C35), followed by a quarter note (D35), and then a quarter note (E35). The fifty-fifth measure contains two eighth notes (F#35, G35), followed by a quarter note (A35), and then a quarter note (B35). The fifty-sixth measure contains two eighth notes (C36, D36), followed by a quarter note (E36), and then a quarter note (F#36). The fifty-seventh measure contains two eighth notes (G36, A36), followed by a quarter note (B36), and then a quarter note (C37). The fifty-eighth measure contains two eighth notes (D37, E37), followed by a quarter note (F#37), and then a quarter note (G37). The fifty-ninth measure contains two eighth notes (A37, B37), followed by a quarter note (C38), and then a quarter note (D38). The sixtieth measure contains two eighth notes (E38, F#38), followed by a quarter note (G38), and then a quarter note (A38). The sixty-first measure contains two eighth notes (B38, C39), followed by a quarter note (D39), and then a quarter note (E39). The sixty-second measure contains two eighth notes (F#39, G39), followed by a quarter note (A39), and then a quarter note (B39). The sixty-third measure contains two eighth notes (C40, D40), followed by a quarter note (E40), and then a quarter note (F#40). The sixty-fourth measure contains two eighth notes (G40, A40), followed by a quarter note (B40), and then a quarter note (C41). The sixty-fifth measure contains two eighth notes (D41, E41), followed by a quarter note (F#41), and then a quarter note (G41). The sixty-sixth measure contains two eighth notes (A41, B41), followed by a quarter note (C42), and then a quarter note (D42). The sixty-seventh measure contains two eighth notes (E42, F#42), followed by a quarter note (G42), and then a quarter note (A42). The sixty-eighth measure contains two eighth notes (B42, C43), followed by a quarter note (D43), and then a quarter note (E43). The sixty-ninth measure contains two eighth notes (F#43, G43), followed by a quarter note (A43), and then a quarter note (B43). The seventieth measure contains two eighth notes (C44, D44), followed by a quarter note (E44), and then a quarter note (F#44). The seventy-first measure contains two eighth notes (G44, A44), followed by a quarter note (B44), and then a quarter note (C45). The seventy-second measure contains two eighth notes (D45, E45), followed by a quarter note (F#45), and then a quarter note (G45). The seventy-third measure contains two eighth notes (A45, B45), followed by a quarter note (C46), and then a quarter note (D46). The seventy-fourth measure contains two eighth notes (E46, F#46), followed by a quarter note (G46), and then a quarter note (A46). The seventy-fifth measure contains two eighth notes (B46, C47), followed by a quarter note (D47), and then a quarter note (E47). The seventy-sixth measure contains two eighth notes (F#47, G47), followed by a quarter note (A47), and then a quarter note (B47). The seventy-seventh measure contains two eighth notes (C48, D48), followed by a quarter note (E48), and then a quarter note (F#48). The seventy-eighth measure contains two eighth notes (G48, A48), followed by a quarter note (B48), and then a quarter note (C49). The seventy-ninth measure contains two eighth notes (D49, E49), followed by a quarter note (F#49), and then a quarter note (G49). The eightieth measure contains two eighth notes (A49, B49), followed by a quarter note (C50), and then a quarter note (D50). The eighty-first measure contains two eighth notes (E50, F#50), followed by a quarter note (G50), and then a quarter note (A50). The eighty-second measure contains two eighth notes (B50, C51), followed by a quarter note (D51), and then a quarter note (E51). The eighty-third measure contains two eighth notes (F#51, G51), followed by a quarter note (A51), and then a quarter note (B51). The eighty-fourth measure contains two eighth notes (C52, D52), followed by a quarter note (E52), and then a quarter note (F#52). The eighty-fifth measure contains two eighth notes (G52, A52), followed by a quarter note (B52), and then a quarter note (C53). The eighty-sixth measure contains two eighth notes (D53, E53), followed by a quarter note (F#53), and then a quarter note (G53). The eighty-seventh measure contains two eighth notes (A53, B53), followed by a quarter note (C54), and then a quarter note (D54). The eighty-eighth measure contains two eighth notes (E54, F#54), followed by a quarter note (G54), and then a quarter note (A54). The eighty-ninth measure contains two eighth notes (B54, C55), followed by a quarter note (D55), and then a quarter note (E55). The ninetieth measure contains two eighth notes (F#55, G55), followed by a quarter note (A55), and then a quarter note (B55). The hundredth measure contains two eighth notes (C56, D56), followed by a quarter note (E56), and then a quarter note (F#56). The hundred-first measure contains two eighth notes (G56, A56), followed by a quarter note (B56), and then a quarter note (C57). The hundred-second measure contains two eighth notes (D57, E57), followed by a quarter note (F#57), and then a quarter note (G57). The hundred-third measure contains two eighth notes (A57, B57), followed by a quarter note (C58), and then a quarter note (D58). The hundred-fourth measure contains two eighth notes (E58, F#58), followed by a quarter note (G58), and then a quarter note (A58). The hundred-fifth measure contains two eighth notes (B58, C59), followed by a quarter note (D59), and then a quarter note (E59). The hundred-sixth measure contains two eighth notes (F#59, G59), followed by a quarter note (A59), and then a quarter note (B59). The hundred-seventh measure contains two eighth notes (C60, D60), followed by a quarter note (E60), and then a quarter note (F#60). The hundred-eight measure contains two eighth notes (G60, A60), followed by a quarter note (B60), and then a quarter note (C61). The hundred-ninth measure contains two eighth notes (D61, E61), followed by a quarter note (F#61), and then a quarter note (G61). The hundred-tenth measure contains two eighth notes (A61, B61), followed by a quarter note (C62), and then a quarter note (D62). The hundred-eleventh measure contains two eighth notes (E62, F#62), followed by a quarter note (G62), and then a quarter note (A62). The hundred-twelfth measure contains two eighth notes (B62, C63), followed by a quarter note (D63), and then a quarter note (E63). The hundred-thirteenth measure contains two eighth notes (F#63, G63), followed by a quarter note (A63), and then a quarter note (B63). The hundred-fourteenth measure contains two eighth notes (C64, D64), followed by a quarter note (E64), and then a quarter note (F#64). The hundred-fifteenth measure contains two eighth notes (G64, A64), followed by a quarter note (B64), and then a quarter note (C65). The hundred-sixteenth measure contains two eighth notes (D65, E65), followed by a quarter note (F#65), and then a quarter note

10

♩ = 80

12

11

8

12

6

13

8